

## IB-30

Sensor Head



## SPECIFICATIONS

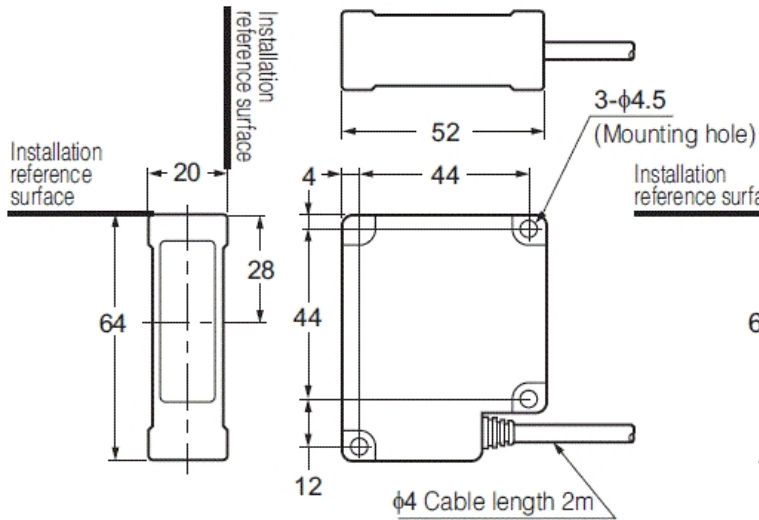
Model		IB-30
Light source	Wavelength	660 nm (Visible light semiconductor laser)
	Laser Class	Class 1 Laser Product (IEC 60825-1, FDA (CDRH) Part 1040.10 <sup>*1</sup> )
Mounting distance		0 to 300 mm
Measurement range		30 mm
Sampling cycle		12,500 times/sec. (80 $\mu$ s)
Minimum detectable object		$\phi$ 0.2 mm <sup>*2</sup>
Repeatability		10 $\mu$ m <sup>*3</sup>
Temperature characteristics		$\pm$ 0.1 % of F.S./°C ( $\pm$ 30 $\mu$ m) <sup>*4</sup>
Operation indicator		Laser emission warning indicator: green LED
Environmental resistance	Ambient light	Incandescent lamp: 10,000 lux, Solar light: 10,000 lux
	Ambient temperature	0 to +50 °C (No freezing)
	Relative humidity	35 to 85 % RH (No condensation)
	Vibration resistance	10 to 55 Hz, Double amplitude 1.5 mm, 2 hours in each of the X, Y, and Z axis
Material	Case	Galvanised die cast
	Lens cover	Glass
	Cable	PVC (2 m)
Weight		Approx. 510 g
<sup>*1</sup> The classification for FDA (CDRH) is implemented based on IEC60825-1 in accordance with the requirements of Laser Notice No.50. <sup>*2</sup> Value when measuring the target (white diffuse object) at the middle of the transmitter and receiver position, and at the centre of the measurement range. <sup>*3</sup> When distance between transmitter and receiver is set to 300 mm, and light is half-shielded at a position 150 mm from receiver. Deflection width ( $\pm 2\sigma$ ) when sampled for 30 seconds with an average number of times set to 64 times. <sup>*4</sup> When distance between transmitter and receiver is set to 100 mm and full light is received.		

## Dimensions

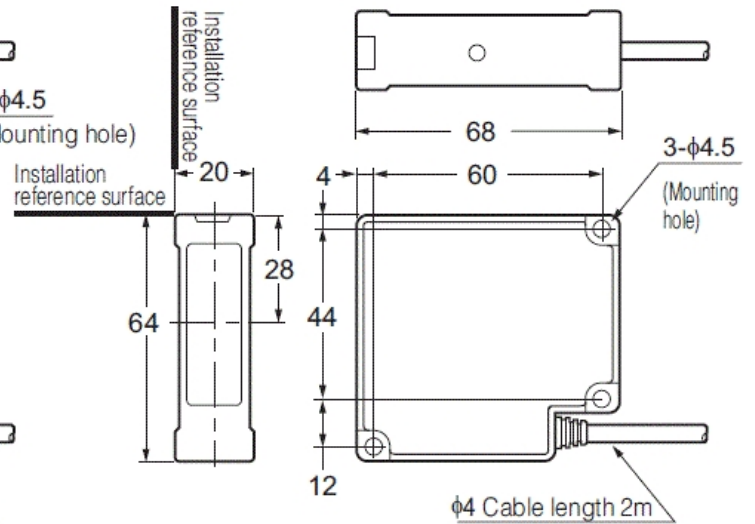
\* Download CAD file or product manual for larger image/text and more detail.

### IB-30

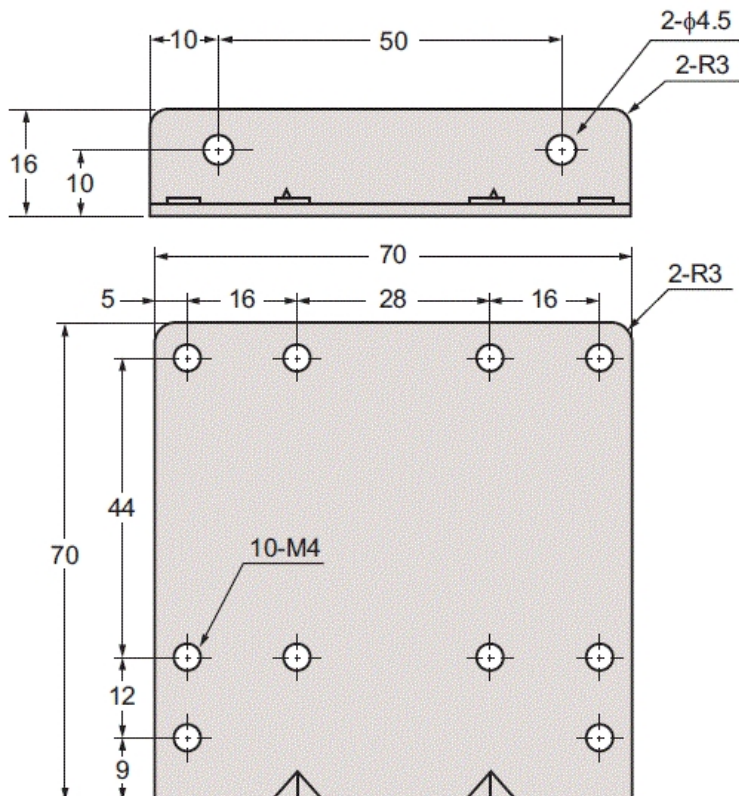
#### Receiver



#### Transmitter



#### Mounting bracket (accessory) for IB-30



\* Enclosed screws  
M4x25 ... 6 screws