



## FS-R0

Wiring-saving Connector Unit

**[Discontinued model]**

This model has been discontinued.

**To contact us:**

☎ 1-800-103-0090

**SPECIFICATIONS**

Model		FS-R0
Response time		410 $\mu$ s to 1.2 ms <sup>2</sup> <sup>1</sup>
Expandable inputs		16 (15 when using stability output)
Number of outputs		16
Control output		NPN open-collector 50 mA max. (40 V max.) Residual voltage: 1 V max.
Protection circuit		Reversed polarity protection, Overcurrent protection, Surge absorber
Rating	Power voltage	12 to 24 VDC $\pm$ 5 %, Ripple (P-P) 5 % or less <sup>2</sup>
	Current consumption	20 mA or less, plus current consumed by expansion units connected
Environmental resistance	Ambient temperature	-10 to +50 °C (No freezing) <sup>3</sup>
	Relative humidity	35 to 85 % RH (No condensation)
	Vibration resistance	10 to 55 Hz, Double amplitude 1.5 mm, 2 hours in each of the X, Y, and Z directions
	Shock resistance	500 m/s <sup>2</sup> , 3 times in each of the X, Y, and Z directions
Case material		Polycarbonate
Weight		Approx. 150 g

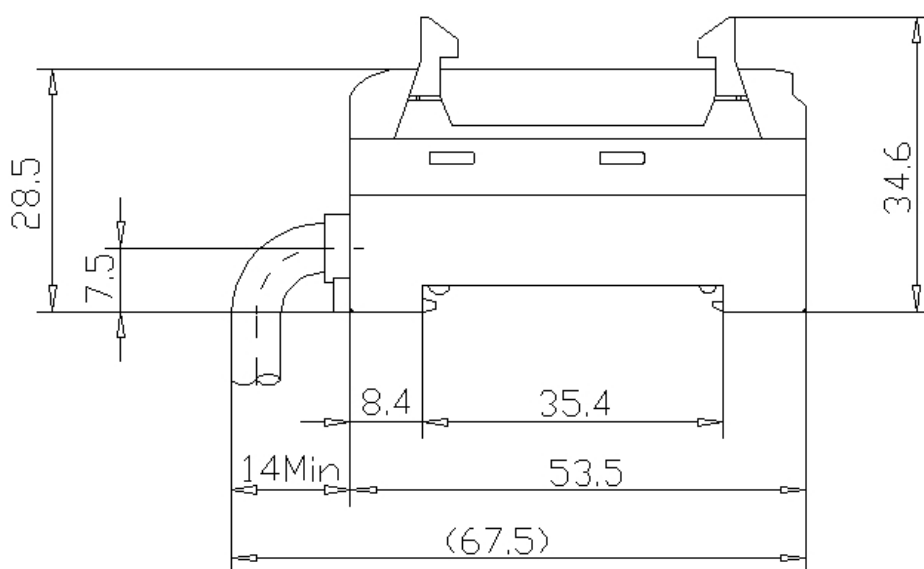
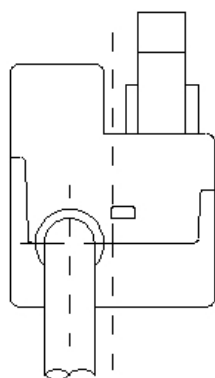
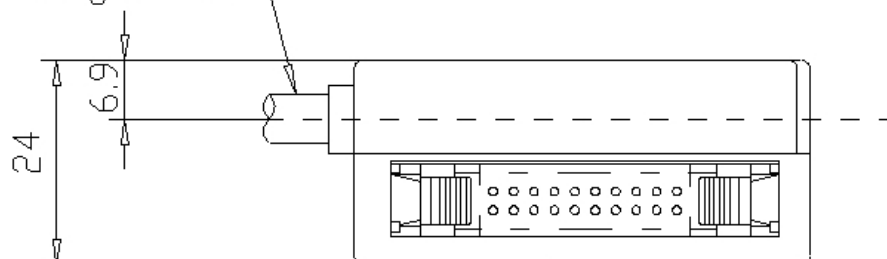
<sup>1</sup> The response speed varies depending on the number of expansion units connected.<sup>2</sup> Change the supply voltage to meet the requirement of the input device (PLC, etc.).<sup>3</sup> If more than one unit is used together, the ambient temperature varies with the conditions below. Mount the units on the DIN rail with mounting brackets and check that the output current is 20 mA or less.  
1 to 10 Units: -10 to +50 °C, 11 to 16 Units: -10 to +45 °C.

**Dimensions**

\* Download CAD file or product manual for larger image/text and more detail.

FS-R0

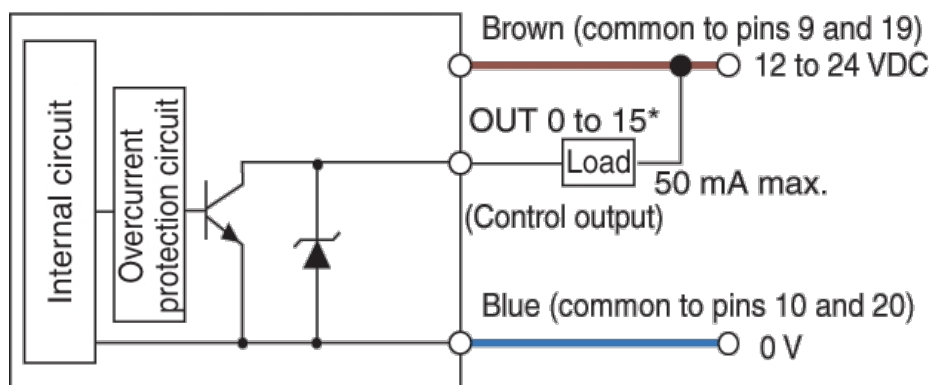
ø5.8,2X0.5mm<sup>2</sup> Core  
Cable length : 2m



## I/O Circuit Connection diagram

\* Download CAD file or product manual for larger image/text and more detail.

### I/O Circuit



\* When OUT 15 is switched to STB, an over-current protection circuit is not provided.