


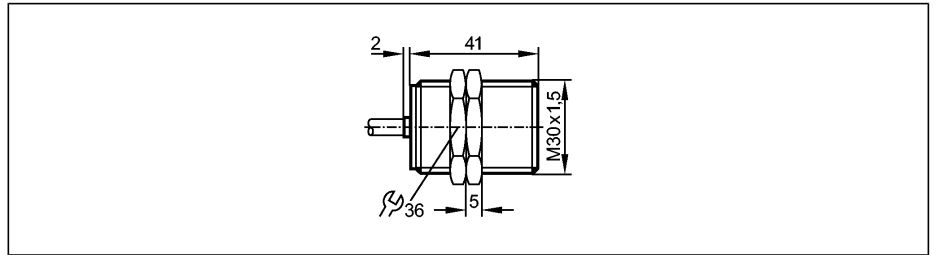
Inductive sensors
NAMUR EN 60947-5-6 

NI5003

II-2015-N/1D/2G
Inductive sensor
Plastic thread M30 x 1.5
Cable

ATEX approval
Group II, category 1D
Group II, category 1G/2G

Sensing range 15mm [nf]
non-flush mountable



Made in Germany

Electrical design

Output

Nominal voltage	[V]
Supply voltage	[V]
Current rating	[mA]
Current consumption	[mA]
Internal capacitance	[nF]
Internal inductance	[µH]
Real sensing range (Sr)	[mm]
Switch-point drift	[% of Sr]
Hysteresis	[% of Sr]
Switching frequency	[Hz]
Correction factors	



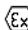
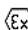
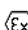
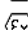
Ambient temperature	[°C]
Protection	
Shock / vibration resistance	
EMC	
MTTF	[Years]
Approval	

Marking of the unit	
---------------------	--

Housing materials	
Connection	

Weight	[kg]
Remarks	
Accessories (included)	

Connection to certified intrinsically safe circuits with the max. values U = 15 V / I = 50 mA / P = 120 mW normally closed

	8.2 DC (1kΩ)
	7.5...30 DC when used outside the hazardous area
	< 30 when used outside the hazardous area
	< 1 *)
	< 145
	< 110
	15 ± 10 %
	-10...10
	1...15
	200
	mild steel = 1 / stainless steel approx. 0.7 / brass approx. 0.5 / Al approx. 0.4 / Cu approx. 0.3
	-20...80
	IP 67, II
	30g (11 ms) / 10-55 Hz (1 mm)
	EN 60947-5-6
	4963
	PTB 01 ATEX 2191 BVS 04 ATEX E153 TIIS TC16109
	 II 1D Ex iaD 20 T 90°C Ta: -20...70°C
	 II 1D Ex iaD 20 T 100°C Ta: -20...80°C
	 II 1G Ex ia IIB T6 Ta: -20...55°C
	 II 1G Ex ia IIB T5 Ta: -20...65°C
	 II 2G Ex ia IIC T6 Ta: -20...70°C
	 II 2G Ex ia IIC T5 Ta: -20...80°C
	PBT
	PVC cable / 2 m; 2 x 0.5 mm ²
	0.173
	*) damped; (> 2.1 mA undamped)
	2 lock nuts

NI5003

Wiring

Core colours

BN brown

BU blue

