



## Czujniki widelkowe WFM

WFM50-60P321



Nazwa modelu > **WFM50-60P321**

Numer cz ci > **6037824**



Produkt mo e ró ni si od ilustracji

#### At a glance

- Highly visible red emitted light
- No setup, out-of-the-box operation
- 360° output indicator
- 5 fork sizes: maximum depth 120 mm, maximum width 180 mm
- Rugged, IP 67 aluminum housing

#### Your benefits

- Fixed housings guarantee a high level of operational safety with simple commissioning
- A visible red light enables easy alignment and fast adjustment
- The 360-degree yellow output indicator makes continual process control possible
- A wide range of different fork sizes increases installation flexibility
- The aluminum housing meets all requirements for use in harsh industrial conditions



#### Cechy

Sposób działania:	Optical detection principle
Fork width:	50 mm
Fork depth:	60 mm
MDO <sup>1)</sup> :	0,8 mm
Label detection:	-
Nadajnik światła:	LED, red
Nastawa:	None
Tryb przełączania:	Przełączanie na ciemnym

<sup>1)</sup> Najmniejszy wykrywalny obiekt

#### Mechanika/elektronika

Napięcie zasilania VS <sup>1)</sup> :	DC 10 V ... 30 V
Tętnienia resztkowe <sup>2)</sup> :	< 10 %
Pobór prądu <sup>3)</sup> :	< 20 mA
Switching frequency <sup>4)</sup> :	4 kHz
Czas reakcji <sup>5)</sup> :	125 µs
Stability of response time:	± 15 µs
Wyjście przełączające:	NPN: HIGH = approx. VS/LOW ≤ 1.5 V PNP: HIGH = VS - ≤ 1.5 V/LOW = 0 V
Tryb przełączania:	PNP

Output current I<sub>max</sub>: 100 mA  
 Initialization time: 140 ms  
 Sposób przyłączenia: Connector M8, 3-pin  
 Bezpieczna jasność oświetlenia: Sunlight: ≤ 10.000 klx  
 Klasa ochronności<sup>6)</sup>: III  
 Układ zabezpieczenia: Vs connections reverse-polarity protected  
 Wyjście Q zabezpieczone przed zwarciami  
 Tłumienie interferencji

Enclosure rating: IP 67  
 Ciężar: Ca. 80 g ... 190 g<sup>7)</sup>  
 Housing material: Aluminium

1) Limit values, reverse-polarity protected, operation in short-circuit protected network, max. 8 A<sup>2)</sup> May not exceed or fall short of V<sub>S</sub> tolerances<sup>3)</sup> Bez obciążenia<sup>4)</sup>  
 With light/dark ratio 1:1<sup>5)</sup> Signal transit time with resistive load<sup>6)</sup> Reference voltage DC 50 V<sup>7)</sup> Depending on fork width

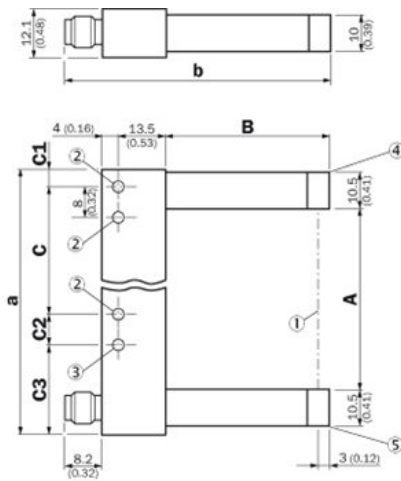
## Dane otoczenia

Ambient temperature<sup>1)</sup>: Operation: -10 ... 60 °C  
 Storage: -40 ... 80 °C

Obciążenie uderzeniowe: According to EN 60068-2-27  
 UL File-No.: UL No. NRKH.E191603 & cUL No. NRKH7.E191603

1) Do not bend below 0 °C

## Dimensional drawing



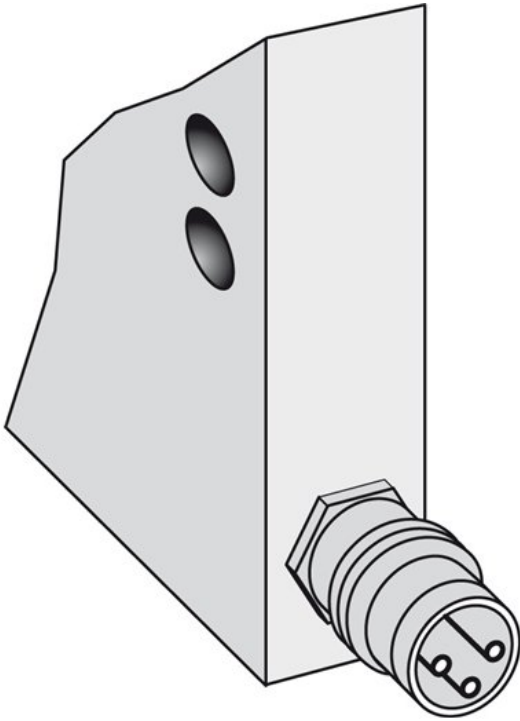
Dimensions in mm (inch)

	A Fork width	B Fork depth	C	C1
WFM30	30 (1.18)	42 (1.65)	30 (1.18)	6.5 (0.26)
WFM50	50 (1.97)	60 (2.36)	40 (1.57)	6.5 (0.26)
WFM80	80 (3.15)	60 (2.36)	70 (2.76)	6.5 (0.26)
WFM120	120 (4.72)	124.3 (4.89)	100 (3.94)	17 (0.67)
WFM180	180 (7.09)	124.3 (4.89)	152 (5.98)	22 (0.87)

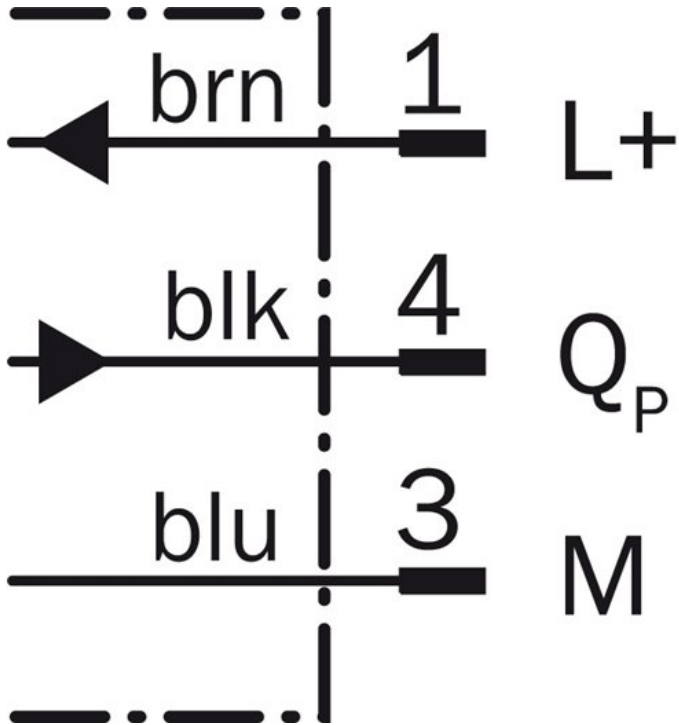
  

	C2	C3	a	b
WFM30	- (-)	- (-)	54 (2.13)	67.7 (2.67)
WFM50	8 (0.31)	19.5 (0.77)	74 (2.91)	85.7 (3.37)
WFM80	8 (0.31)	19.5 (0.77)	104 (4.09)	85.7 (3.37)
WFM120	10 (0.39)	17 (0.67)	144 (5.67)	150.2 (5.91)
WFM180	8 (0.31)	22 (0.87)	204 (8.03)	150.2 (5.91)

Connection type



Connection diagram



**Australia**

Phone +61 3 9457 0600  
1800 334 802 – tollfree  
E-Mail sales@sick.com.au

**Belgium/Luxembourg**

Phone +32 (0)2 466 55 66  
E-Mail info@sick.be

**Brasil**

Phone +55 11 3215-4900  
E-Mail sac@sick.com.br

**Canada**

Phone +1(952) 941-6780  
1 800-325-7425 – tollfree  
E-Mail info@sickusa.com

**Ceská Republika**

Phone +420 2 57 91 18 50  
E-Mail sick@sick.cz

**China**

Phone +86 4000 121 000  
E-Mail info.china@sick.net.cn  
Phone +852-2153 6300  
E-Mail ghk@sick.com.hk

**Danmark**

Phone +45 45 82 64 00  
E-Mail sick@sick.dk

**Deutschland**

Phone +49 211 5301-301  
E-Mail kundenservice@sick.de

**España**

Phone +34 93 480 31 00  
E-Mail info@sick.es

**France**

Phone +33 1 64 62 35 00  
E-Mail info@sick.fr

**Great Britain**

Phone +44 (0)1727 831121  
E-Mail info@sick.co.uk

**India**

Phone +91-22-4033 8333  
E-Mail info@sick-india.com

**Israel**

Phone +972-4-6801000  
E-Mail info@sick-sensors.com

**Italia**

Phone +39 02 27 43 41  
E-Mail info@sick.it

**Japan**

Phone +81 (0)3 3358 1341  
E-Mail support@sick.jp

**Magyarország**

Phone +36 1 371 2680  
E-Mail office@sick.hu

**Nederlands**

Phone +31 (0)30 229 25 44  
E-Mail info@sick.nl

**Norge**

Phone +47 67 81 50 00  
E-Mail austefjord@sick.no

**Österreich**

Phone +43 (0)22 36 62 28 8-0  
E-Mail office@sick.at

**Polska**

Phone +48 22 837 40 50  
E-Mail info@sick.pl

**România**

Phone +40 356 171 120  
E-Mail office@sick.ro

**Russia**

Phone +7-495-775-05-30  
E-Mail info@sick.ru

**Schweiz**

Phone +41 41 619 29 39  
E-Mail contact@sick.ch

**Singapore**

Phone +65 6744 3732  
E-Mail admin@sicksgp.com.sg

**Slovenija**

Phone +386 (0)1-47 69 990  
E-Mail office@sick.si

**South Africa**

Phone +27 11 472 3733  
E-Mail info@sickautomation.co.za

**South Korea**

Phone +82 2 786 6321/4  
E-Mail info@sickkorea.net

**Suomi**

Phone +358-9-25 15 800  
E-Mail sick@sick.fi

**Sverige**

Phone +46 10 110 10 00  
E-Mail info@sick.se

**Taiwan**

Phone +886-2-2375-6288  
E-Mail sales@sick.com.tw

**Türkiye**

Phone +90 (216) 528 50 00  
E-Mail info@sick.com.tr

**United Arab Emirates**

Phone +971 (0) 4 8865 878  
E-Mail info@sick.ae

**USA/México**

Phone +1(952) 941-6780  
1 800-325-7425 – tollfree  
E-Mail info@sickusa.com

More representatives and agencies  
at [www.sick.com](http://www.sick.com)